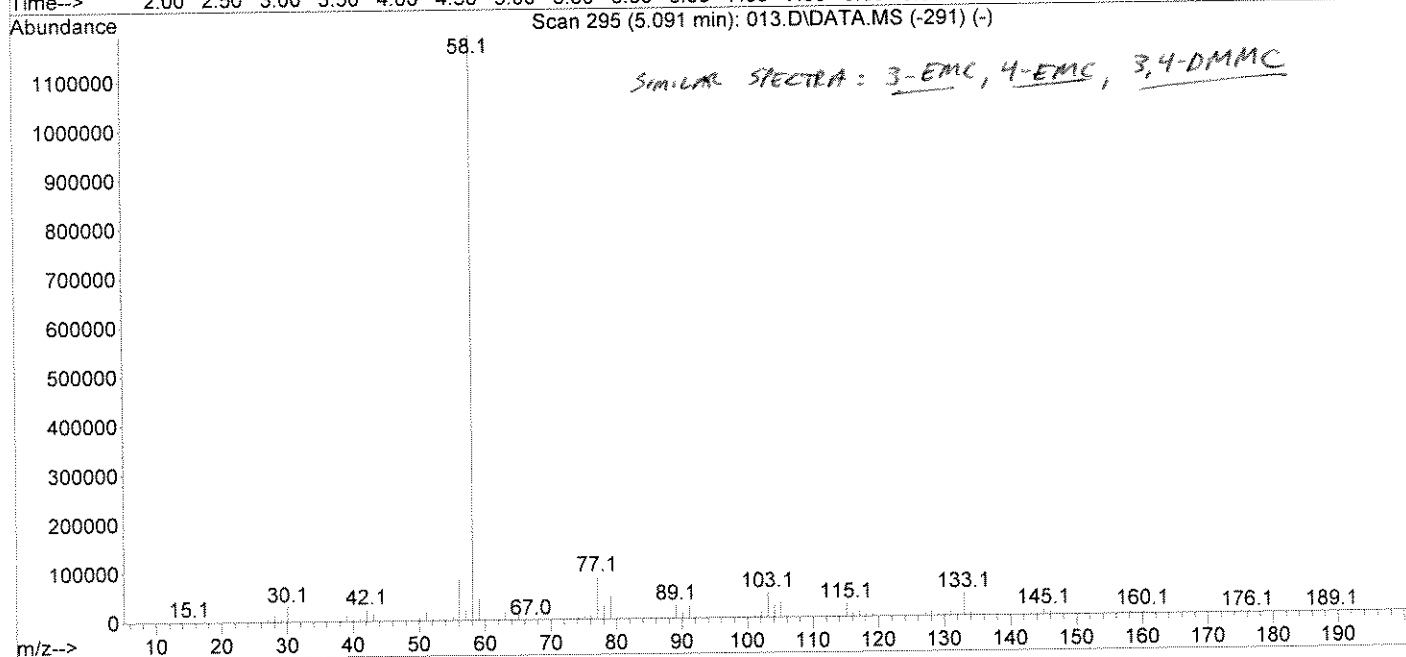
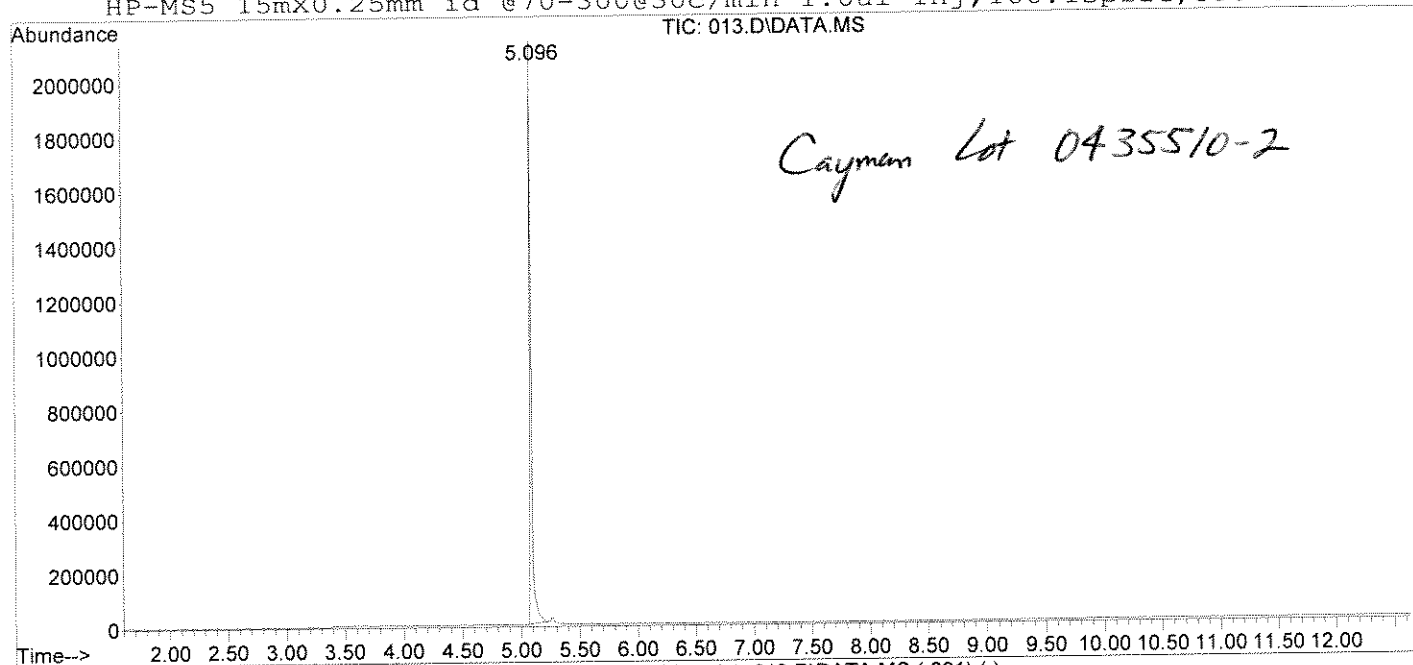


DATA FILE : C:\msdchem\1\DATA\06262012\013.D  
ACQ METHOD : BATHSALTS.M  
FILE TYPE : GC/ MS DATA FILE  
SAMPLE NAME : 2-Ethylmethcathinone STD E4a  
MISC INFO : SPH 2-EMC  
BARCODE : ERR  
VIAL NUMBER : 13

OPERATOR : western staff  
DATE : 26 Jun 2012 16:54  
INSTRUMENT : GC 7890A/MS 5975C BILLIE

HP-MS5 15mX0.25mm id @70-300@30c/min 1.0ul inj,100:1split,550-14 da



peak number : 1 retention time: 5.09087

RESULT FROM \database\SWGDRUG04112012.L :  
~~4-Ethylmethcathinone~~  
THE LIBRARY SEARCH QUALITY IS: 83

Scan 295 (5.091 min): 013.D\DATA.MS (-291)

2-Ethylmethcathinone STD E4a

Modified:subtracted

m/z	abund.	m/z	abund.	m/z	abund.	m/z	abund.
15.10	17	39.10	84	54.10	23	65.10	88
17.10	0	40.10	17	55.10	50	66.10	12
18.10	2	41.10	53	56.10	690	67.00	3
26.10	6	42.10	204	57.10	160	70.20	4
27.10	55	43.10	131	58.10	10000	71.60	5
28.10	117	44.05	23	59.10	368	72.25	5
29.10	62	45.10	3	60.10	5	72.90	6
30.10	257	50.10	64	61.10	5	74.10	42
31.10	6	51.10	179	62.10	33	75.10	53
32.05	6	52.10	42	63.10	135	76.10	67
38.10	10	53.10	44	64.10	39	77.10	726

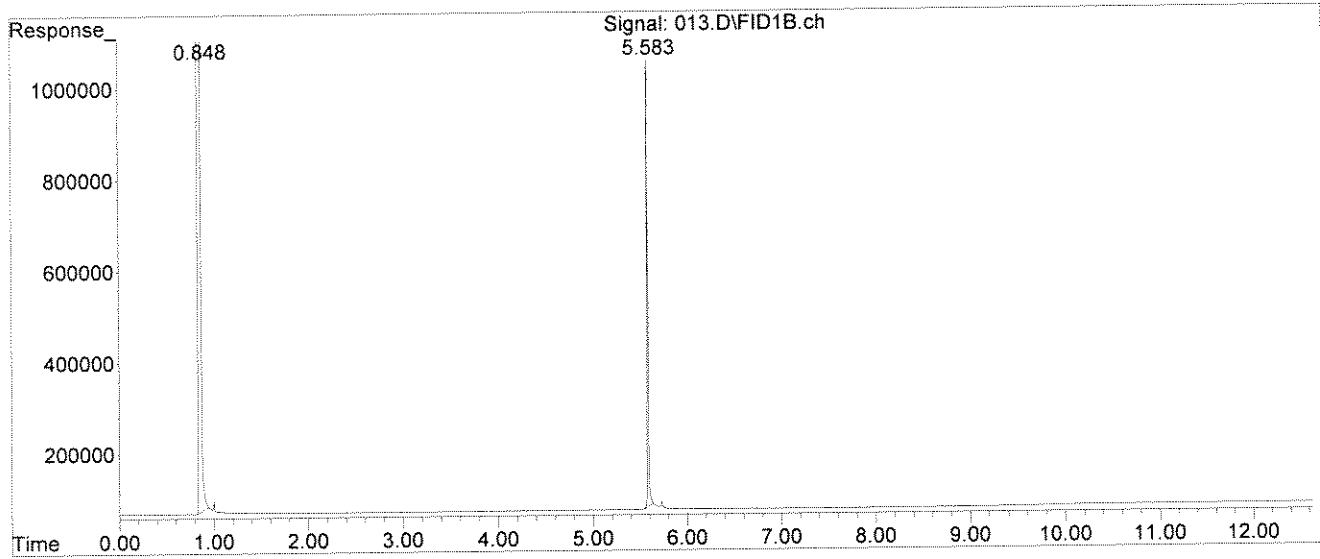
m/z	abund.	m/z	abund.	m/z	abund.	m/z	abund.
78.10	232	101.10	17	117.10	96	133.05	384
79.10	395	102.10	96	118.10	34	134.05	42
80.10	31	103.10	423	119.10	65	135.05	4
86.10	9	104.10	210	120.10	8	139.00	4
87.10	15	105.10	259	126.10	6	140.00	3
88.10	8	106.10	30	127.10	39	141.05	12
89.10	228	107.00	3	128.05	71	142.05	7
90.10	115	113.00	4	129.05	40	143.05	20
91.10	212	114.00	5	130.05	30	144.05	42
92.10	19	115.10	227	131.05	71	145.05	96
98.00	5	116.10	57	132.05	43	146.05	53

m/z	abund.	m/z	abund.	m/z	abund.	m/z	abund.
147.05	23	174.10	12				
148.05	12	175.10	10				
156.10	7	176.10	13				
157.10	12	187.10	5				
158.10	26	188.10	3				
159.10	18	189.10	10				
160.10	56	190.10	5				
161.10	20	191.10	6				
162.10	9						
172.10	7						
173.10	5						



DATA FILE : C:\msdchem\1\DATA\06262012\013.D  
ACQ METHOD : BATHSALTS.M  
FILE TYPE : GC/ FID DATA FILE  
SAMPLE NAME : 2-Ethylmethcathinone STD E4a  
MISC INFO : SPH 2-EMC

VIAL NUMBER : 13  
COLUMN : HP-1, 0.25mm X 15m  
OPERATOR : western staff  
DATE : 26 Jun 2012 16:54  
INSTRUMENT : GC 7890A / MS 5975C BILLIE



Signal: 013.D\FID1B.ch  
2-Ethylmethcathinone STD E4a

Peak#	Ret Time	Type	Width	Area	Start Time	End Time
1	0.848	BB	0.013	1411042083	0.821	0.945
2	5.583	BB	0.012	7920106	5.543	5.638

western staff 2-Ethylmethcathinone STD E4a SPH 2-EMC