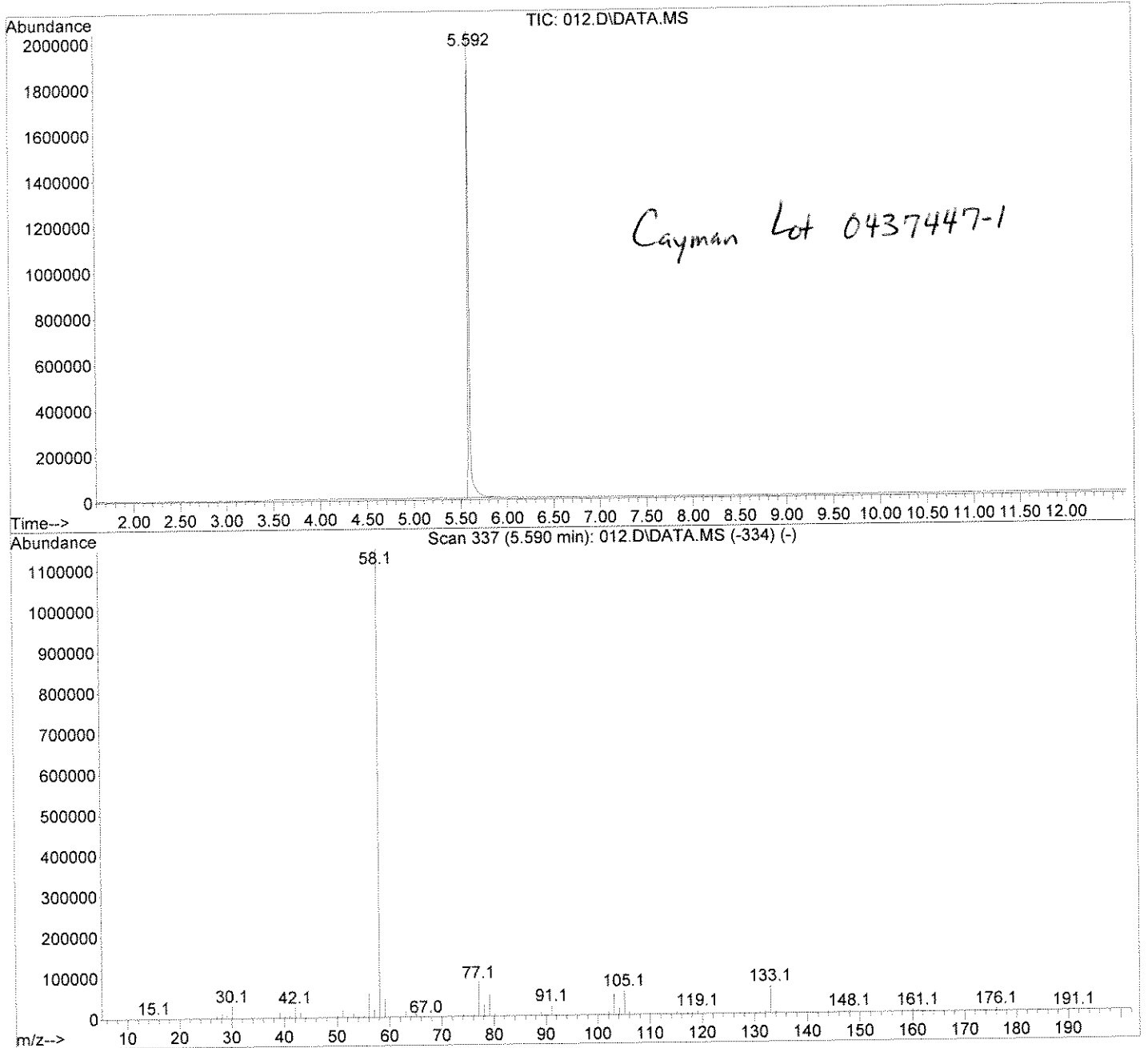


DATA FILE : C:\msdchem\1\data\06262012\012.D
ACQ METHOD : BATHSALTS.M
FILE TYPE : GC/ MS DATA FILE
SAMPLE NAME : 3,4-Dimethylmethcathinone STD D2a
MISC INFO : SPH 3,4-DMMC
BARCODE : ERR
VIAL NUMBER : 12

OPERATOR : western staff
DATE : 26 Jun 2012 16:39
INSTRUMENT : GC 7890A/MS 5975C BILLIE



peak number : 1 retention time: 5.58952

RESULT FROM \database\SWGDRUG052011.L :
4-Methylmethamphetamine
THE LIBRARY SEARCH QUALITY IS: 83

Scan 337 (5.590 min): 012.D\DATA.MS (-334)

3,4-Dimethylmethcathinone STD D2a

Modified:subtracted

m/z	abund.	m/z	abund.	m/z	abund.	m/z	abund.
15.10	17	39.10	107	55.10	50	66.10	17
17.10	3	40.10	20	56.10	542	67.00	4
18.10	2	41.10	65	57.10	182	73.10	3
26.10	6	42.10	225	58.10	10000	74.10	28
27.10	61	43.10	125	59.10	372	75.10	34
28.10	124	44.05	16	60.10	6	76.10	37
29.10	63	50.10	47	61.10	5	77.10	720
30.10	260	51.10	149	62.10	33	78.10	249
31.10	6	52.10	49	63.10	137	79.10	443
32.05	4	53.10	77	64.10	35	80.10	33
38.10	10	54.10	25	65.10	109	86.10	10

m/z	abund.	m/z	abund.	m/z	abund.	m/z	abund.
87.00	14	104.10	136	128.05	27	144.05	16
88.00	5	105.10	515	129.05	16	145.05	19
89.10	93	106.10	80	130.05	15	146.05	18
90.10	35	107.10	16	131.05	29	147.05	29
91.10	218	115.10	72	132.05	29	148.05	47
92.10	21	116.10	27	133.05	594	149.05	5
93.10	5	117.10	46	134.05	67	157.10	3
98.00	6	118.10	21	135.05	6	158.10	16
101.10	10	119.10	82	141.05	3	159.10	7
102.10	80	120.10	10	142.05	3	160.10	41
103.10	456	127.10	11	143.05	5	161.10	46

m/z	abund.	m/z	abund.	m/z	abund.	m/z	abund.
162.10	23	190.20	12				
163.10	3	191.10	16				
172.10	5	192.10	4				
173.10	4						
174.10	24						
175.10	26						
176.10	59						
177.10	7						
187.10	5						
188.10	7						
189.10	6						

File :C:\msdchem\1\data\06262012\012.D
Operator : western staff
Acquired : 26 Jun 2012 16:39 using AcqMethod BATHSALTS.M
Instrument : Billie
Sample Name: 3,4-Dimethylmethcathinone STD D2a
Misc Info : SPH 3,4-DMMC ERR
Vial Number: 12

