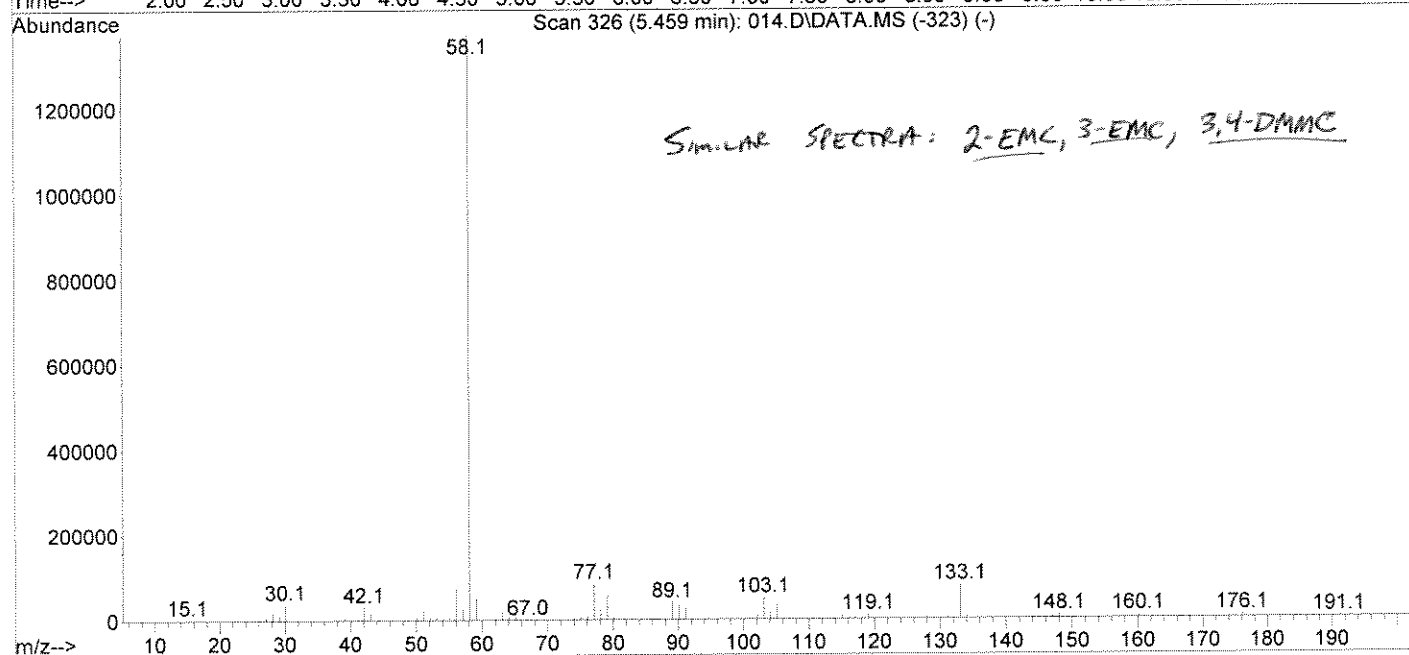
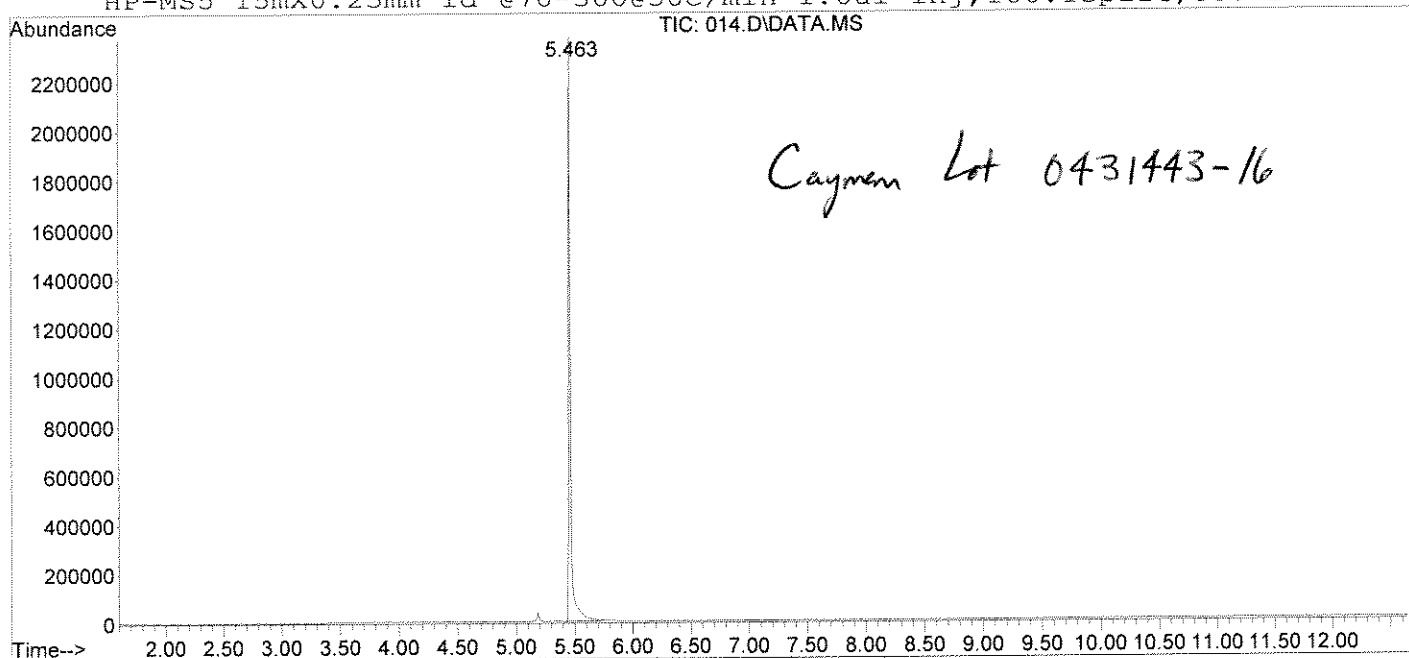


DATA FILE : C:\msdchem\1\DATA\06262012\014.D  
ACQ METHOD : BATHSALTS.M  
FILE TYPE : GC/ MS DATA FILE  
SAMPLE NAME : 4-Ethylmethcathinone STD E5a  
MISC INFO : SPH 4-EMC  
BARCODE : ERR  
VIAL NUMBER : 14

OPERATOR : western staff  
DATE : 26 Jun 2012 17:09  
INSTRUMENT : GC 7890A/MS 5975C BILLIE

HP-MS5 15mX0.25mm id @70-300@30c/min 1.0ul inj,100:1split,550-14 da



peak number : 1 retention time: 5.4589

RESULT FROM \database\SWGDRUG04112012.L :  
4-Ethylmethcathinone  
THE LIBRARY SEARCH QUALITY IS: 83

Scan 326 (5.459 min): 014.D\DATA.MS (-323)

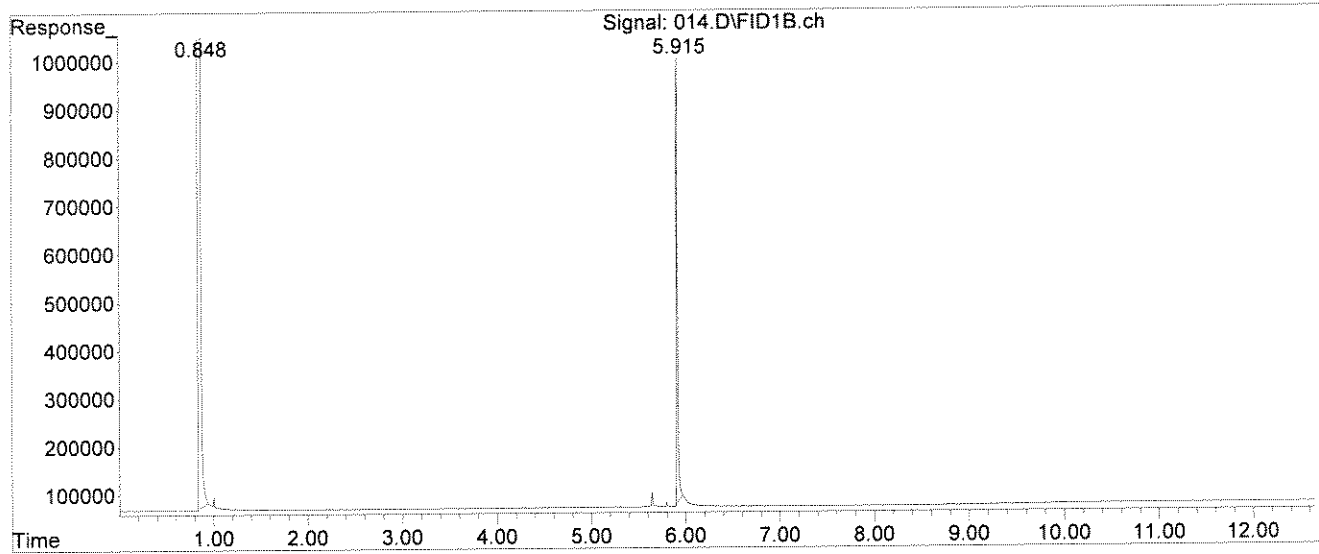
4-Ethylmethcathinone STD E5a

Modified:subtracted

m/z	abund.	m/z	abund.	m/z	abund.	m/z	abund.
15.10	16	39.10	74	55.10	43	66.10	13
17.10	3	40.10	16	56.10	536	67.00	2
18.10	2	41.10	56	57.10	175	73.10	4
26.10	6	42.10	226	58.10	10000	74.10	38
27.10	57	43.10	133	59.10	384	75.10	45
28.10	122	44.05	14	60.10	6	76.10	68
29.10	70	50.10	70	61.00	5	77.10	611
30.10	270	51.10	152	62.10	33	78.10	167
31.10	6	52.10	37	63.10	131	79.10	413
32.10	5	53.10	46	64.10	41	80.10	31
38.10	9	54.10	22	65.10	87	86.00	9
m/z	abund.	m/z	abund.	m/z	abund.	m/z	abund.
87.10	13	104.10	114	128.05	24	144.05	16
88.00	6	105.10	263	129.05	14	145.05	7
89.10	291	106.10	34	130.05	18	146.05	21
90.10	237	107.00	3	131.05	29	147.05	45
91.10	177	115.10	54	132.05	25	148.05	54
92.10	16	116.10	19	133.05	568	149.05	6
93.10	2	117.10	47	134.05	63	156.10	3
98.00	5	118.10	32	135.05	6	157.10	3
101.00	13	119.10	70	141.05	2	158.10	10
102.10	71	120.10	9	142.05	3	159.10	5
103.10	367	127.10	11	143.00	6	160.10	47
m/z	abund.	m/z	abund.	m/z	abund.	m/z	abund.
161.10	28	190.10	11				
162.10	18	191.10	11				
172.10	10	192.10	6				
173.10	5						
174.10	10						
175.10	11						
176.10	45						
177.10	6						
187.10	5						
188.10	6						
189.10	3						

DATA FILE : C:\msdchem\1\DATA\06262012\014.D  
ACQ METHOD : BATHSALTS.M  
FILE TYPE : GC/ FID DATA FILE  
SAMPLE NAME : 4-Ethylmethcathinone STD E5a  
MISC INFO : SPH 4-EMC

VIAL NUMBER : 14  
COLUMN : HP-1, 0.25mm X 15m  
OPERATOR : western staff  
DATE : 26 Jun 2012 17:09  
INSTRUMENT : GC 7890A / MS 5975C BILLIE



Signal: 014.D\FID1B.ch  
4-Ethylmethcathinone STD E5a

Peak#	Ret Time	Type	Width	Area	Start Time	End Time
1	0.848	BB	0.014	1435817125	0.825	0.945
2	5.915	BB	0.013	7895042	5.884	5.970

western staff 4-Ethylmethcathinone STD E5a SPH 4-EMC