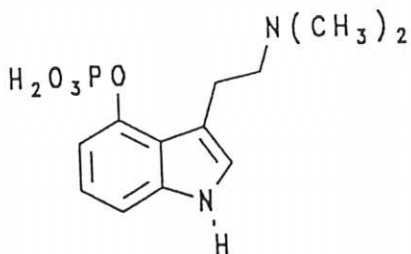


PSILOCYBIN

24



- SYNONYMS: 3-[2-(Dimethylamino)ethyl]-1H-indol-4-ol dihydrogen phosphate ester
Indocybin
O-Phosphoryl-4-Hydroxy-N,N-dimethyltryptamine
- FORMULA: $C_{12}H_{17}N_2O_4P$
- MOLECULAR WEIGHT: 284.25 g/mole
- MELTING POINT: 185-195°C (methanol) 220-228°C (water)
- SOLUBILITY: Moderately soluble in water and methanol. Very low solubility in benzene, chloroform and hydrocarbons.
- STABILITY: Hydrolyzed to Psilocyn by ammonium hydroxide or other alkaline media.
- SOURCES: Found in Mexican mushrooms such as *Psilocybe mexicana*, *P. sempervirens*, *P. cubensis*, *Conocybe cyanopus* and *Stropharia*. Found in the North American mushroom *P. pelliculosa*.

